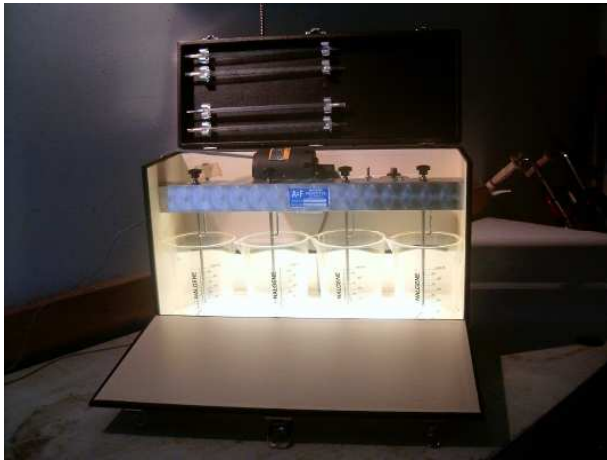


**R**ichard hourigan, inc.  
Responding to the needs of industry since 1973

---

# PORTABLE JAR MIXER

- **POSITIVE GEAR DRIVE**
- **VARIABLE SPEED AGITATION**
- **DIFFUSED LIGHTING**
- **STURDY-COMPACT-SELF CONTAINED FOR FIELD OR LABORATORY USE**



- A small gear head motor drives the stainless steel agitators, variable from 6 RPM to 250 RPM via a panel mounted potentiometer (optional digital read out of paddle speed is available)
- Diffused lighting emanates from a false bottom via an ON-OFF switch and aids in evaluation of mix samples for clarity, floc particle size, and liquid-solid separation
- The front panel of the study carrying case is removable for easy access to the agitators and controls.
- The lid stores pipettes and has a heavy duty handle for transporting the Jar Mixer
- The false bottom supports the 1000 ml beakers and test solutions
- Includes a 120 VAC, 60 Hz GFI protected power supply cord (optional 220 VAC, 50/60 Hz available)
- The portable Jar Mixer is available in 2, 4, and 6 station models

[Click Here for current pricing or purchase from TheWaterTreatmentStore.com](http://TheWaterTreatmentStore.com)