

ALDEN, a division of Metrex Research Corporation

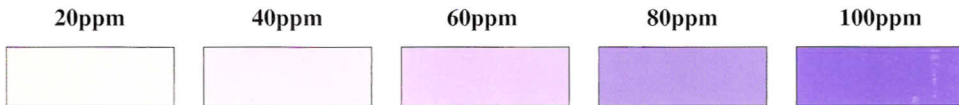
360 Cold Spring Ave., West Springfield, MA 01089 • (800) 742-1990 • Fax (413) 747-9721

GLUTATECT WT COLOR COMPARISON CHART

See detailed instruction sheet.

Introduce 1cc of sample to be tested. The timing of the test is critical.

Wait **five** minutes for the reaction to occur, and match your developed color to the chart. If color is darker than desired, then there is more than required; if color is lighter than desired, then there is less than required.



10ppm glutaraldehyde very faint color development at 8 minutes.

Reaction times will vary according to ambient temperatures. The above times and colors are relative to a room temperature of 25°C (72°F).

DO NOT TEST AT TEMPERATURES GREATER THAN ROOM TEMPERATURES.