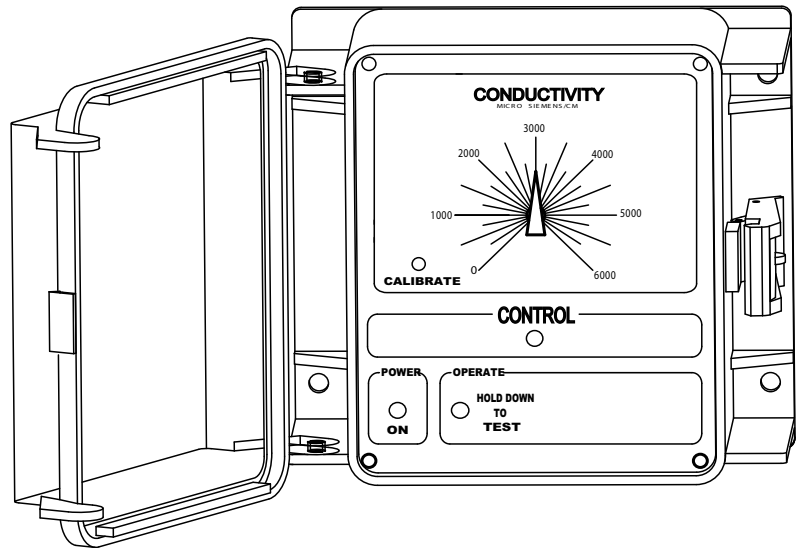


Model A MINUS

Conductivity Controller

This product bulletin is provided by www.TheWaterTreatmentStore.com which is a wholly owned subsidiary of Richard Hourigan, Inc. To view our listing of Advantage Controls products available for on line purchase (at 10%-20% discounts) or to order a custom made Advantage Controls package at the same discount rate, **CLICK ANYWHERE WITHIN THIS BOX.**



Key Features

- NEMA 4X Type Enclosure
- Simple to Operate
- Front Panel Calibration
- Front Panel Set Point
- LED Indicator Lights
- Low Cost
- Pre-Wired Configuration
- 2 Year Warranty

Application

The Model A MINUS conductivity controller provides accurate control of recirculating water systems such as cooling towers.

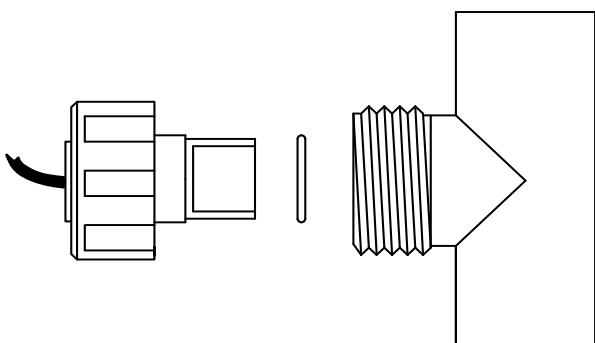
If the conductivity level exceeds an operator set value, a control relay is activated to operate a bleed off valve and/or chemical feed pump.

The Model A MINUS utilizes a simple analog design to maintain a constant cycles of concentration level saving water and maximizing chemical efficiency.

Options

Your unit may be supplied with one or more options listed at the end of the model number for example, A MINUS-5D. This list represents our most popular options. For a complete list of options, consult the factory.

- 3** Conduit Connections
- 5** Mounted flow switch
- D** Reverse set point
- J** Gray PVC Flow Switch
Instead of Standard Clear PVC
- L** Additional Scales (see price list)



TE-2 Electrode with quick disconnect

Specifications

Electrical

- **Input:** 115 VAC, 60 Hz
 - **Control:** 115 VAC Relay 10 amp resistive
- Prewired units are supplied with an eight foot power cord with plug and 11" output receptacles.

Operational

- **Display:** Linear dial
- **Scale:** 0-6000 (standard)
- **Drift:** Less than 0.25% per month
- **Differential:** Factory set at 6%
- **Accuracy:** +/- 2%

Enclosure

Heavy duty NEMA 4X type high impact thermoplastic with padlockable gasketed Lexan viewing door

Environment

- Ambient temperature: 0° to 140°F (-17 to 58°C)
- Relative humidity: 0 to 100%

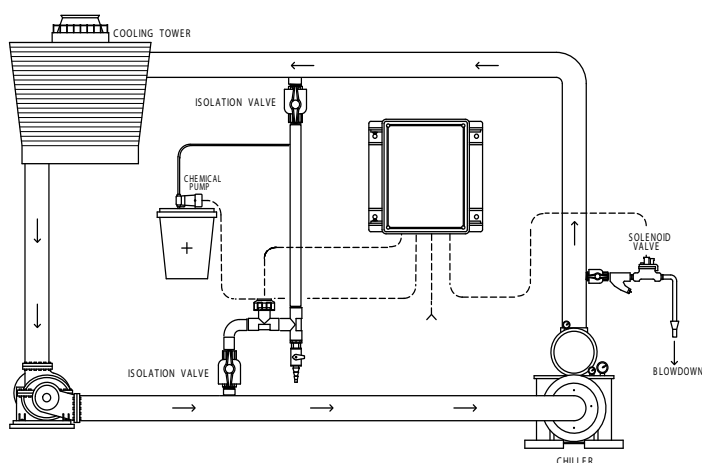
Electrode

Standard TE-2 non-temperature compensated electrode supplied in a 3/4"(1.9 cm) FSLIP tee

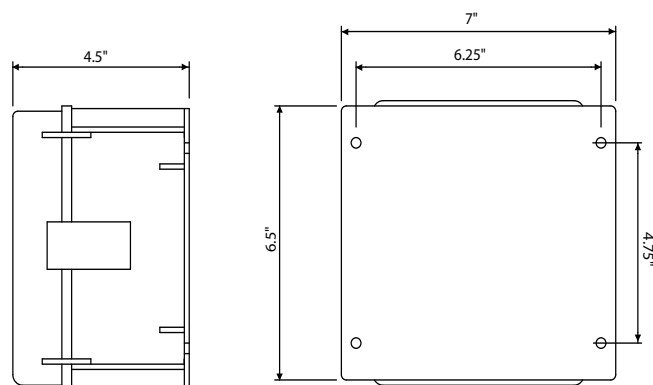
- Pressure Max: 150 psi (10.4 bar)
- Temperature Max: 140°F (58°C)

Shipping Weight: 4 lbs.

Dimensions: W 7" x H 6.5" x D 4.5"



Typical Installation



Get the Advantage
from: www.TheWaterTreatmentStore.com