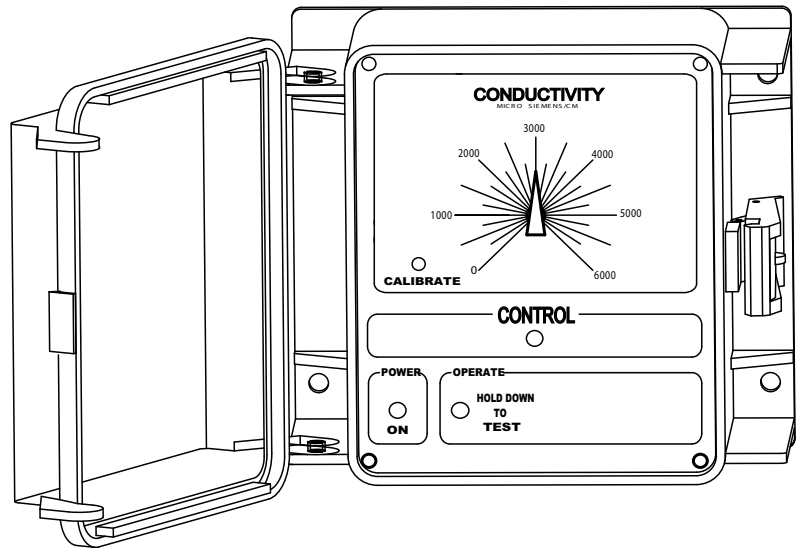


# Model A MINUS

## Conductivity Controller

This product bulletin is provided by [www.TheWaterTreatmentStore.com](http://www.TheWaterTreatmentStore.com) which is a wholly owned subsidiary of Richard Hourigan, Inc. To view our listing of Advantage Controls products available for on line purchase (at 10%-20% discounts) or to order a custom made Advantage Controls package at the same discount rate, CLICK ANYWHERE WITHIN THIS BOX.



### Key Features

- NEMA 4X Type Enclosure
- Simple to Operate
- Front Panel Calibration
- Front Panel Set Point
- LED Indicator Lights
- Low Cost
- Pre-Wired Configuration
- 2 Year Warranty

### Application

The Model A MINUS conductivity controller provides accurate control of recirculating water systems such as cooling towers.

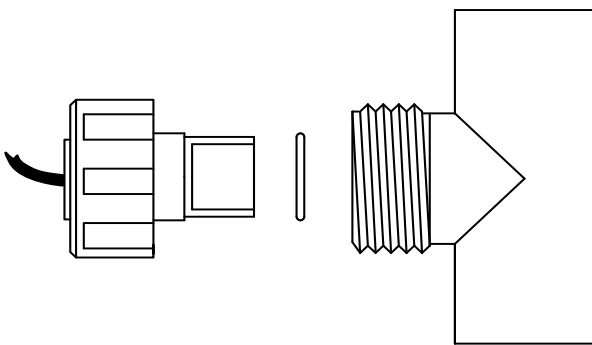
If the conductivity level exceeds an operator set value, a control relay is activated to operate a bleed off valve and/or chemical feed pump.

The Model A MINUS utilizes a simple analog design to maintain a constant cycles of concentration level saving water and maximizing chemical efficiency.

## Options

Your unit may be supplied with one or more options listed at the end of the model number for example, A MINUS-5D. This list represents our most popular options. For a complete list of options, consult the factory.

- 3 Conduit Connections
- 5 Mounted flow switch
- D Reverse set point
- J Gray PVC Flow Switch  
Instead of Standard Clear PVC
- L Additional Scales (see price list)



TE-2 Electrode with quick disconnect

## Specifications

### Electrical

- **Input:** 115 VAC, 60 Hz
  - **Control:** 115 VAC Relay 10 amp resistive
- Prewired units are supplied with an eight foot power cord with plug and 11" output receptacles.

### Operational

- **Display:** Linear dial
- **Scale:** 0-6000 (standard)
- **Drift:** Less than 0.25% per month
- **Differential:** Factory set at 6%
- **Accuracy:** +/- 2%

### Enclosure

Heavy duty NEMA 4X type high impact thermoplastic with padlockable gasketed Lexan viewing door

### Environment

- Ambient temperature: 0° to 140°F (-17 to 58°C)
- Relative humidity: 0 to 100%

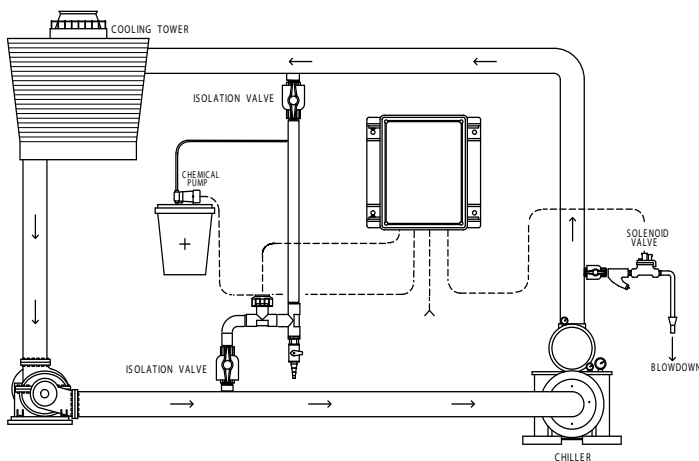
### Electrode

Standard TE-2 non-temperature compensated electrode supplied in a 3/4" (1.9 cm) FSLIP tee

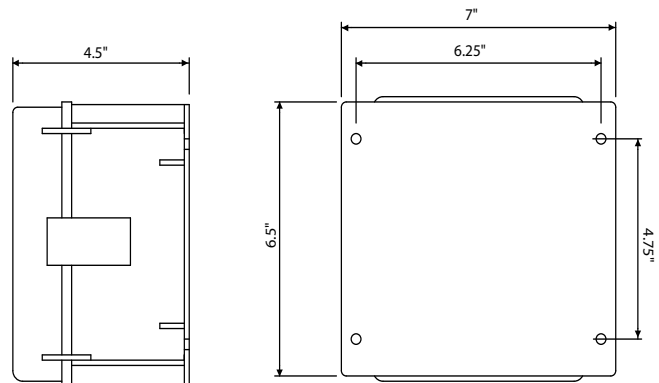
- Pressure Max: 150 psi (10.4 bar)
- Temperature Max: 140°F (58°C)

**Shipping Weight:** 4 lbs.

**Dimensions:** W 7" x H 6.5" x D 4.5"



Typical Installation



**Get the Advantage**

from: [www.TheWaterTreatmentStore.com](http://www.TheWaterTreatmentStore.com)